

Biomarker Research Drug Discovery Services

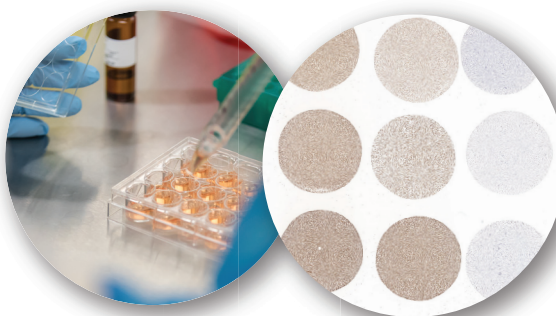
PRECISION

ACCELERATION

HIGH THROUGHPUT

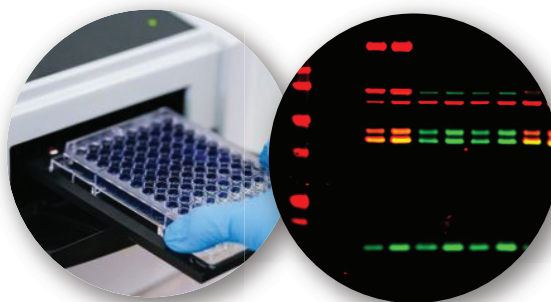
Cell Based Research

Over 300 in-house cell lines
Cell assays and characterization
Biomarker overexpression
FFPE or OCT cell pellets and arrays



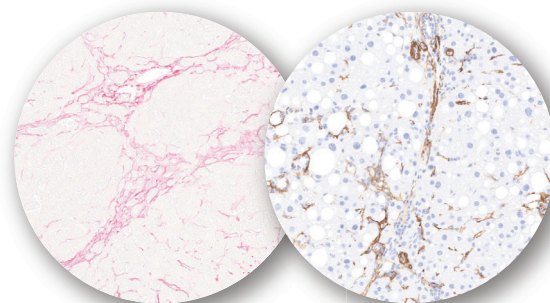
Biomarker and Pathway Characterization

Expression analysis
Compound screening
Signaling pathway characterization
Protein and molecular biology studies



Pre-clinical Studies

Animal tissue processing
In vitro biomarker characterization
Histopathology analysis
Over 50 validated mouse-specific antibodies



Assay Development

Immunostaining and IHC antibody screening
Assay optimization and validation
CDx assay development and transfer

Histo-Pathology Services

One-stop solutions from wet tissue to digital archiving and analysis

Histology and Pathology are essential workflows in biomarker discovery, translational research, drug development, and diagnostic test development. **Acepix Histo-pathology Services** are one-stop solutions from wet tissues to digital archiving and analysis to fulfill the needs of all applications

Highest Quality

Comprehensive

Economical

Fast Turnaround



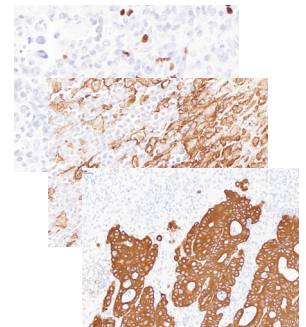
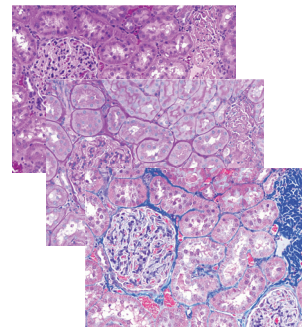
Basic Histology Services

- FFPE processing**
 - Grossing and cassetting
 - Processing and embedding
 - TMA construction
 - FFPE sectioning
- Cryo (OCT) processing**
 - Cryo-embedding
 - Cryo-sectioning



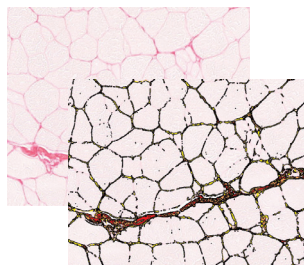
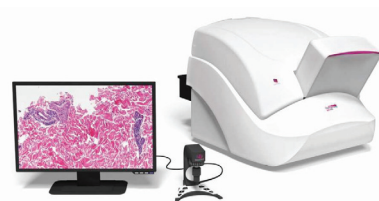
Staining Services

- Histology staining**
 - H&E
 - Special stain
 - TUNEL
- Advanced staining**
 - Immunohistochemistry (IHC)
 - In situ hybridization (ISH)
 - Automated staining



Digital Pathology Services

- Digital archiving**
 - 40X whole-slide scan
 - Extended focus
 - 100% QC for maximum quality
- Digital image analysis**
 - Routine analysis of IHC and special staining
 - Custom algorithm development



Pathology Services

- Pathologist review**
 - Review by Board certified pathologists
 - Pathology report

