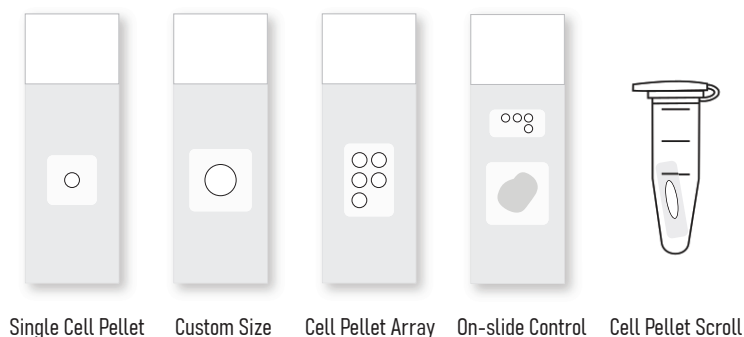
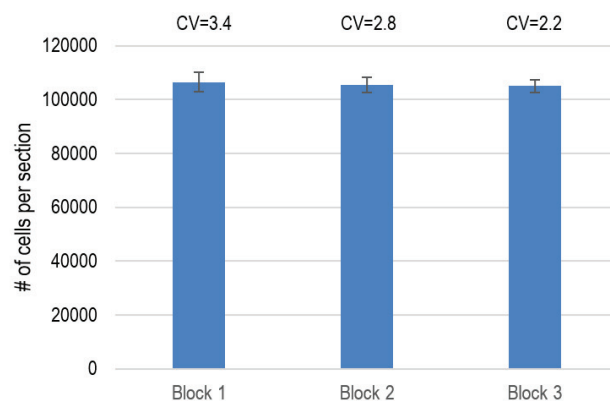
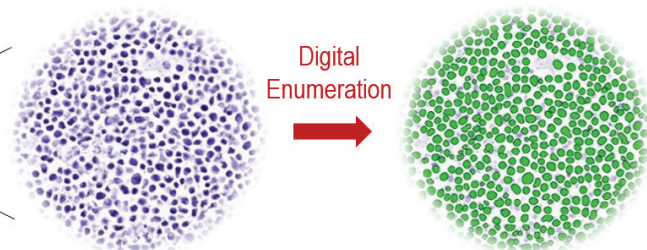
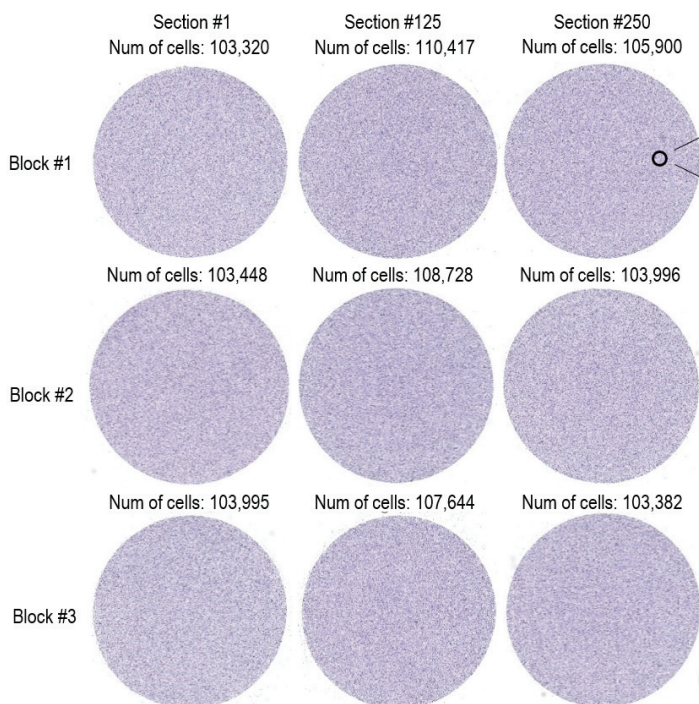


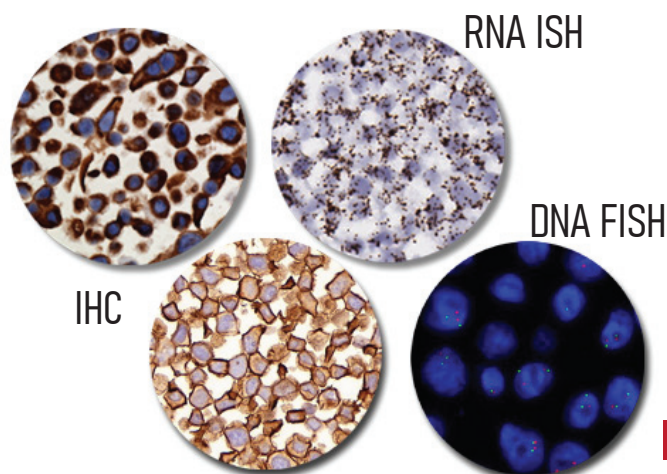
# A-FLX™ FFPE Cell Pellets

The ultimate research and diagnostic tools and reference materials

**Formalin-Fixed Paraffin-Embedded (FFPE)** specimens are an important sample type for research and diagnostics. However, considerable variabilities may occur during sample collection and processing, leading to inconsistent downstream analyses. **A-FLX™ FFPE Cell Pellets** are prepared under strictly controlled conditions and manufactured with high precision and consistency, making them ideal tools for biomarker discovery, assay development, and testing reference materials.



- High consistency
- High quality biomolecules
- Versatile formats
- Over 300 in-house cell lines
- Validated biomarker controls
- Highly customizable



# A-FLX™ Control Cell Pellet Arrays (CPA)



**Our High-Yield High-Consistency FFPE Cell Pellet Arrays (CPA)** harboring high protein and RNA quality cover wide-spectrum expression of biomarkers and are ideal tools for assay development, biomarker discovery and validation, and test controls.



**Over 700**

Section yield per block (3µm)



**Over 1 Million**

Consistent slides produced



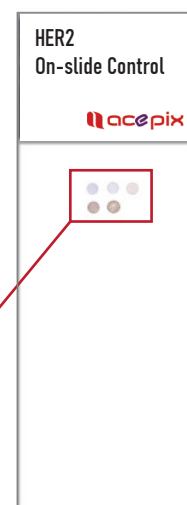
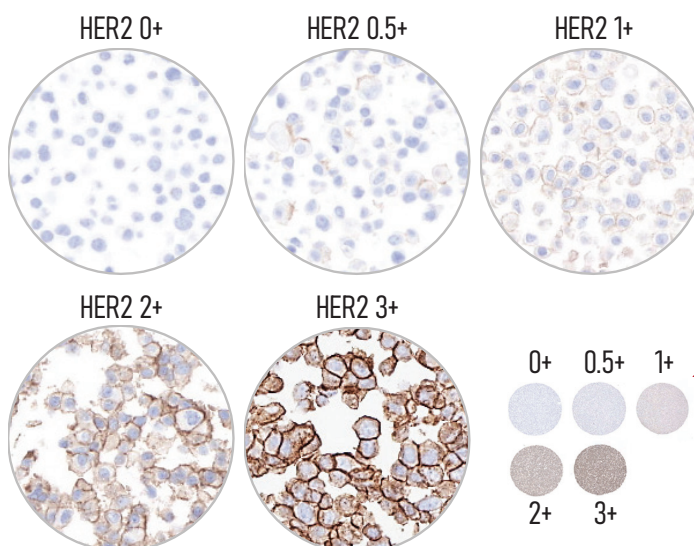
**Over 300**

Cell lines for custom CPA

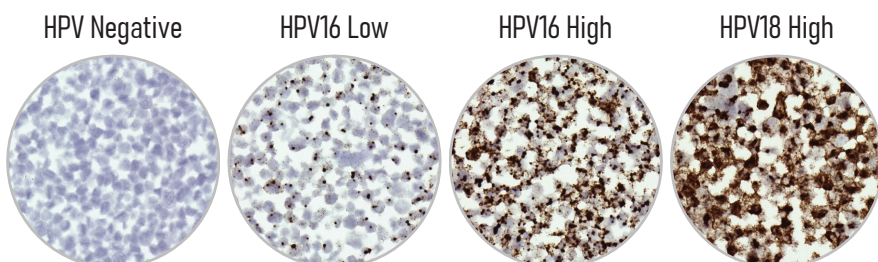
## HER2 On-slide Control CPA

The first 5-core HER2 control panel designed for enhanced sensitivity and optimized to include critical cut-offs for HER2 Ultralow (0.5+, 1+) and HER2 Low (1+, 2+)

Name: HER2 Cell Pellet Array  
SKU: 3700-0220  
Core number: 5  
Core size: 2mm  
Intended use: Research use only  
Validated on: Benchmark Ultra (Roche),  
Omnis (DAKO), Bond III/RX (Leica)

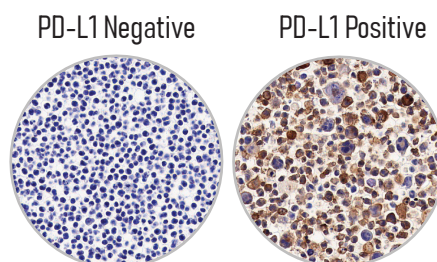


## HPV Cell Pellet Array



Name: HPV Cell Pellet Array  
SKU: 3700-0320  
Core number: 4  
Core size: 2mm  
Intended use: Research use only  
Validated by: RNAscope RNA ISH (Biotechne)

## PD-L1 Cell Pellet Array



Name: PD-L1 Cell Pellet Array  
SKU: 3700-0420  
Core number: 2  
Core size: 2mm  
Intended use: Research use only  
Validated on: Benchmark Ultra (Roche),  
Omnis (DAKO)