

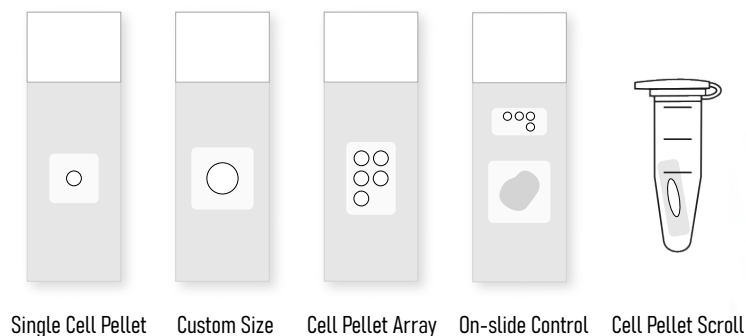
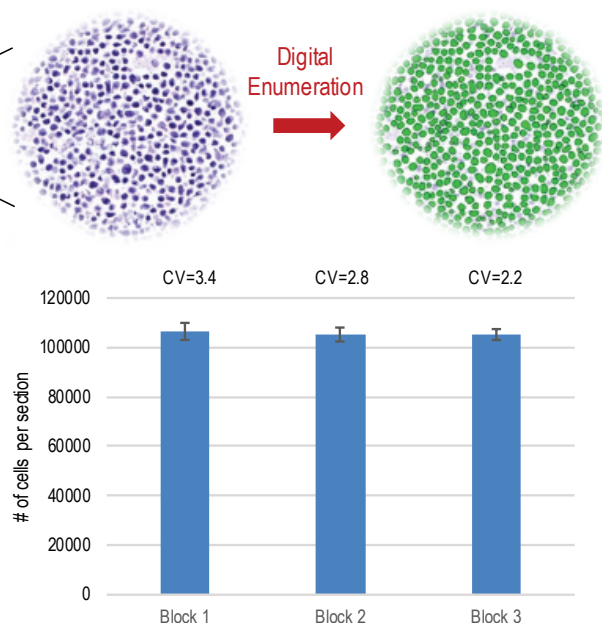
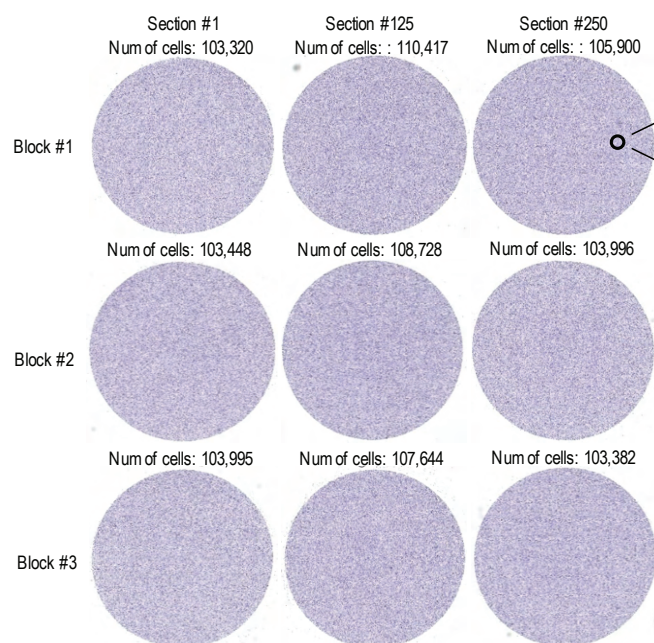
Acepix Biosciences

Partner of BioPharma Research since 2017

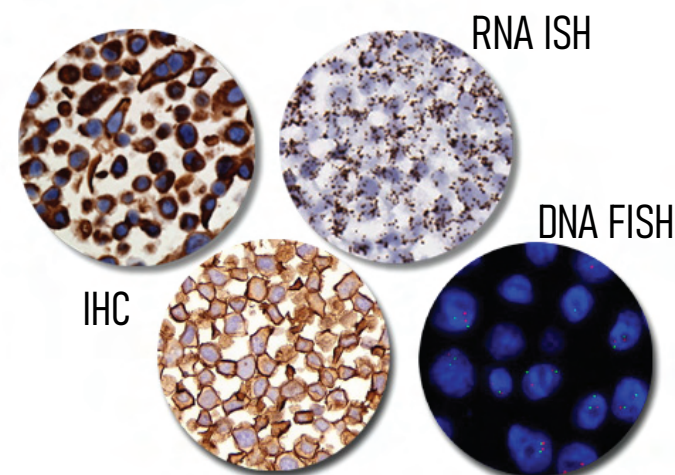
A-FLX™ FFPE CELL PELLET

The ultimate research and diagnostic tools and reference materials

Formalin-Fixed Paraffin-Embedded (FFPE) specimens are an important sample type for research and diagnostics. However, considerable variabilities may occur during sample collection and processing, leading to inconsistent downstream analyses. **A-FLX™ FFPE Cell Pellets** are prepared under strictly controlled conditions and manufactured with high precision and consistency, making them ideal tools for biomarker discovery, assay development, and testing reference materials.



- High consistency
- High quality biomolecules
- Versatile formats
- Over 300 in-house cell lines
- Validated biomarkers controls
- Highly customizable



HISTO-PATHOLOGY SERVICES

One stop solutions from wet tissue to digital archiving and analysis

Histology and Pathology are essential work-flows in biomarker discovery, translational research, drug development, and diagnostic test development. **Acepix Histo-pathology Services** are one-stop solutions from wet tissues to digital archiving and analysis to fulfill the needs of all applications.

Highest Quality

Economical



Comprehensive

Fast Turnaround

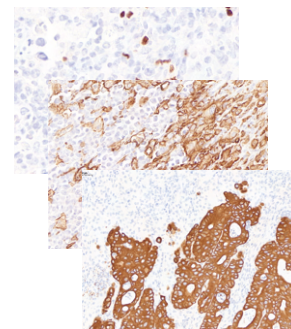
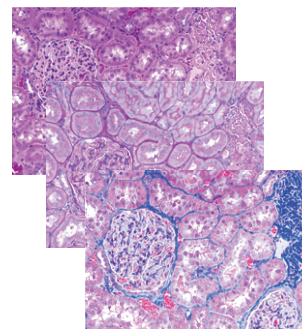
Basic Histology Services

- **FFPE processing**
 - Grossing and cassetting
 - Processing and embedding
 - TMA construction
 - FFPE sectioning
- **Cryo (OCT) processing**
 - Cryo-embedding
 - Cryo-sectioning



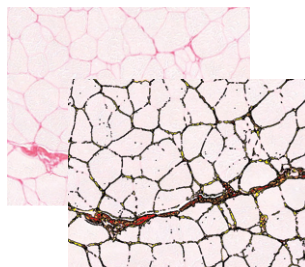
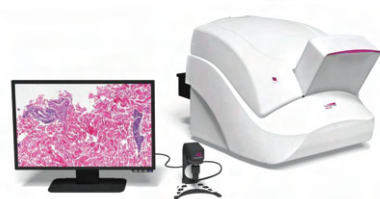
Staining Services

- **Histology staining**
 - H&E
 - Special stain
 - TUNEL
- **Advanced staining**
 - Immunohistochemistry (IHC)
 - In situ hybridization (ISH)
 - Automated staining



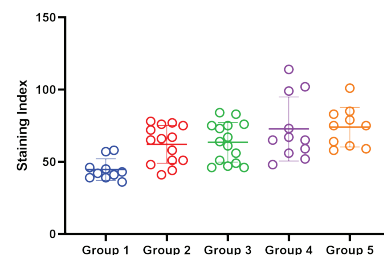
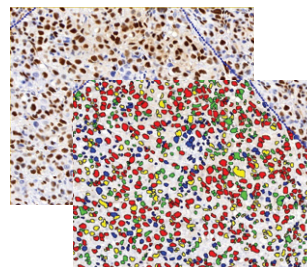
Digital Pathology Services

- **Digital archiving**
 - 40X whole slide scan
 - Extended focus
 - 100% QC for maximum quality
- **Digital image analysis**
 - Routine analysis of IHC and special staining
 - Custom algorithm development



Pathology Services

- **Pathologist review**
 - Review by Board certified pathologists
 - Pathology report



BIOMARKER RESEARCH DRUG DISCOVERY SERVICES

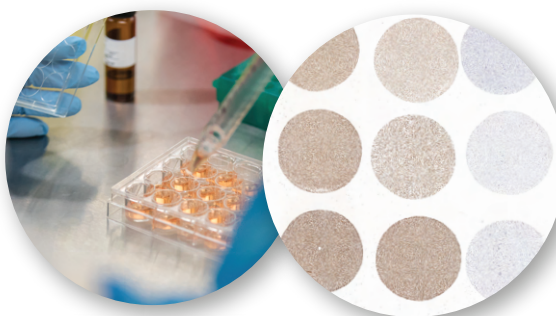
PRECISION

ACCELERATION

HIGH THROUGHPUT

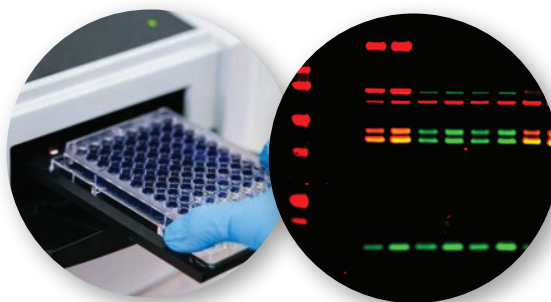
Cell Based Research

Over 300 in-house cell lines
Cell assays and characterization
Biomarker over-expression
FFPE or OCT cell pellet and array



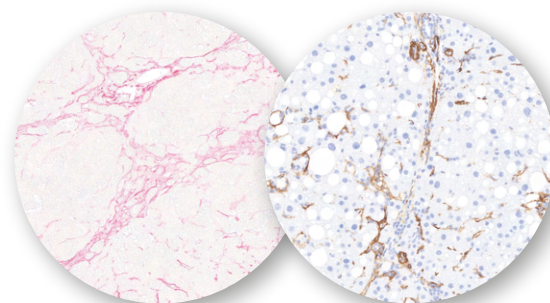
Biomarker and Pathway Characterization

Expression analysis
Compound screening
Signaling pathway characterization
Protein and molecular biology studies



Pre-clinical Studies

Animal tissue processing
In-vitro biomarker characterization
histo-pathology analysis
Over 50 validated mouse-specific antibodies



Assay Development

Immunostaining and IHC antibody screening
Assay optimization and validation
CDx assay development and transfer